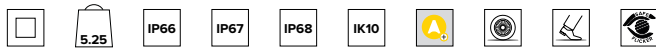
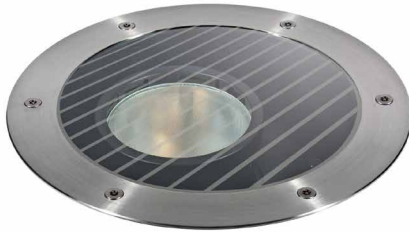


E013ZMH840DAASS | KEPLERO 280 Zoom

Adjustable recessed professional projector equipped with LED sources and variable beam openings



SOURCE

High efficiency Chip on Board LED Ra80. 3500K colour temperature available on request.

Energy efficiency class: D

Nominal power: 30W

Nominal flux: 4979lm

Colour rendering index: 80

Rf: 82

Rg: 95

CCT nominal: 4000K

Lifetime (L80/B10): >50000h tq +25°C

ILLUMINOTECHNICAL CHARACTERISTICS

A patented hybrid lens/reflector Zoom optical system with the possibility of sliding and locking on the vertical axis in four positions for as many beam openings. Beam adjustability up to 20° on the vertical plane and 360° on the horizontal plane obtained by rotation of the optical group, with double aim locking system. Optic group pre-set for the installation of one or more dedicated optical accessories to be ordered separately.

Optic: ZOOM

Beam angles: SP, FL, MWFL, WFL

Optical efficiency: See photometries

Fixture flux: See photometries

Luminous efficacy: See photometries

Photobiological safety: Compliant with RG1 low risk group

MECHANICAL CHARACTERISTICS

Die-cast aluminium body with 3 layers of protection: anodised, cataphoresis and black paint. Brushed stainless steel (AISI 316) ultra flat decorative ring with bevelled edge (natural finish). Version with anti-slip protective glass for public pedestrian areas. Anti theft stainless steel A4 Torx screws.

Colour and finish: Brushed stainless steel

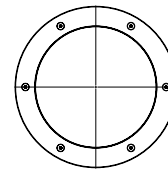
Weight: 5.25Kg

Version: ANTI-SLIP GLASS

Degree of protection: IP66,IP67,IP68

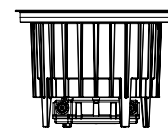
Mechanical Resistance: IK10

The fixture's photometric values can be found on the following pages



Ø210

Ø280



202

The figures on the drawing are expressed in mm.

ELECTRICAL CHARACTERISTICS

Integrated IP68 DALI power supply equipped with IP68 waterproof connectors set for connection to the mains with a H07RN8-F (max2x2.5mm²) cable. Fixture with a pass-through line. Casambi control system available using a dedicated accessory (only for DALI version products).

Fixture Power: 35W

Power supply: 220-240Vac 50/60Hz

Insulation Class: CLASS 2

Type of driver / Control: DALI

Driver included: YES

Class F: YES

SAFE FLICKER: PstLM=<1 and SVM=<0.4 (IEC TR 61547-1 and IEC TR 63158), to ensure a more comfortable and safe light

Ambient temperature: -25°C / +35°C

INSTALLATION

Nylon installation sleeve to be ordered separately as an accessory. The sleeve is pre-set for both flush or straight edge installation. 20kN resistance to static load.

NOTES

All light fixtures must be completed with an installation sleeve. IP68: the projector is not suitable for permanent underwater installation but can withstand temporary accidental immersion to a depth of 2 metres (max.24h). All versions of the KEPLERO family meet all the requirements of EN 60598-2-13 standard regarding drive-over and walk-over performances. Low temperatures on the glass make them suitable even for installation in "special areas", such as spaces for children. Uses the "Waterblock Plus" technical solution that involves resin coating the connection cables and completely resin coating the integrated driver limiting the risk of humidity reaching the fixture. 110-277Vac version available on request. Commissioning of the control system via free APP; the intervention of a specialist technician can be quoted on request.

WARNING

Luminaire designed for disposal/recycling at end-of-life. Replaceable (LED only) light source by a professional. Replaceable control gear by a professional.

Due to the technological evolution of the electronic components, the data provided may be updated, and as such, confirmation must be requested during the order process.

Luminous flux and power supply have +/-10% tolerances with respect to the indicated value. tq +25°C (CIE 121).

We reserve the right to make technical changes.

Targetti Sankey S.r.l.
Via Pratese, 164
50145 Firenze - Italy
Tel: +39 055 37911
targetti.com
targetti@targetti.com

CCIAA Firenze
Share Capital:
€ 500.000,00
VAT N. (IT):
01537660480
R.E.A: FI-275656

TARGETTI

E013ZMH840DAASS | KEPLERO 280 Zoom

Adjustable recessed professional projector equipped with LED sources and variable beam openings

		4000K	H(m)	D(m)	E _{max} (lx)	
		Ra80				
		19°				
	Fixture Power	35W	1	0.34	12540	
	Source Flux	4979lm	2	0.67	3135	
	Fixture Flux	1823lm	3	1.01	1393	
	Efficacy	52lm/W	4	1.34	784	
	TS782	I _{max} =2519cd/klm	I _{max}	12540cd	5	1.68

		4000K	H(m)	D(m)	E _{max} (lx)	
		Ra80				
		26°				
	Fixture Power	35W	1	0.46	8687	
	Source Flux	4979lm	2	0.93	2172	
	Fixture Flux	2413lm	3	1.39	965	
	Efficacy	69lm/W	4	1.86	543	
	TS781	I _{max} =1745cd/klm	I _{max}	8687cd	5	2.32

SP

Fixture flux	1823lm
Luminous efficacy	52lm/W
Optical efficiency	37%

FL

Fixture flux	2413lm
Luminous efficacy	69lm/W
Optical efficiency	48%

		4000K	H(m)	D(m)	E _{max} (lx)	
		Ra80				
		43°				
	Fixture Power	35W	1	0.78	5011	
	Source Flux	4979lm	2	1.56	1253	
	Fixture Flux	3015lm	3	2.34	557	
	Efficacy	86lm/W	4	3.12	313	
	TS780	I _{max} =1006cd/klm	I _{max}	5011cd	5	3.90

		4000K	H(m)	D(m)	E _{max} (lx)	
		Ra80				
		64°				
	Fixture Power	35W	1	1.25	2981	
	Source Flux	4979lm	2	2.50	745	
	Fixture Flux	3162lm	3	3.75	331	
	Efficacy	91lm/W	4	5.00	186	
	TS779	I _{max} =599cd/klm	I _{max}	2981cd	5	6.25

MWFL

Fixture flux	3015lm
Luminous efficacy	86lm/W
Optical efficiency	61%

WFL

Fixture flux	3162lm
Luminous efficacy	91lm/W
Optical efficiency	64%

Due to the technological evolution of the electronic components, the data provided may be updated, and as such, confirmation must be requested during the order process.
Luminous flux and power supply have +/-10% tolerances with respect to the indicated value. tq +25°C (CIE 121).

We reserve the right to make technical changes.

Targetti Sankey S.r.l.
Via Pratese, 164
50145 Firenze - Italy
Tel: +39 055 37911
targetti.com
targetti@targetti.com

CCIAA Firenze
Share Capital:
€ 500.000,00
VAT N. (IT):
01537660480
R.E.A: FI-275656

TARGETTI

E013ZMH840DAASS | KEPLERO 280 Zoom

Adjustable recessed professional projector equipped with LED sources and variable beam openings

Related codes

Sleeve



Code

1E2394

Grey nylon installation sleeve.
The sleeve is pre-set for both flush or straight edge installation.
Complete with dedicated cover cap for installations in concrete.
Flush ring Ø 286 H.225.
Straight edge ring Ø 271 H. 223.

Accessories

Filter



Ø mm

Code

101

1T1696

Flat striped glass blade light refractive filter.
This makes the beam take on an oval shape and when combined with spotlights, the light blade appears more prominent.

Grid



Ø mm

Code

101

1T1699

Anti-glare louver.
Black painted metal honeycomb structure.

Shutter



Colour

Code

●

1E2402

Half-moon shutter.

Tool



Code

1E2496

Metal handle for fixture removal



Code

1E2495

Features TORX HEAD, TX 30.

Due to the technological evolution of the electronic components, the data provided may be updated, and as such, confirmation must be requested during the order process.
Luminous flux and power supply have +/-10% tolerances with respect to the indicated value. tq +25°C (CIE 121).

We reserve the right to make technical changes.

Targetti Sankey S.r.l.
Via Pratese, 164
50145 Firenze - Italy
Tel: +39 055 37911
targetti.com
targetti@targetti.com

CCIAA Firenze
Share Capital:
€ 500.000,00
VAT N. (IT):
01537660480
R.E.A: FI-275656

TARGETTI

E013ZMH840DAASS | KEPLERO 280 Zoom

Adjustable recessed professional projector equipped with LED sources and variable beam openings

Tool



Code

1E0388

Sucker tool to raise the glass.

Connector



Code

1E2769

Linear connection box IP66/IP68.
5 poles max. wire section 1.5mm².
Cable diameter range from 7 to 12mm.

Control systems



Code

1E3048

IP67 wireless control unit with DALI interface.

It generates a local DALI2 bus, enabling a direct connection to a DALI interface LED driver.

The module can only be used in a closed system and cannot be connected to an existing DALI network.

The module is wireless controlled using a Casambi app for smartphones and tablets using Bluetooth 5.0 technology.

The devices automatically create an adaptive, robust, and reliable wireless mesh network, allowing for the easy and efficient management of a high number of fixtures. The control unit is preset to the DALI 1CH profile, meaning the device can control a single DALI driver with broadcast commands.

In addition to the DALI broadcast, other operating modes are available, such as:

- Button (normally open)
- Control unit 0/1-10V
- Control unit DALI Tunable White DT8
- Presence sensor



Code

1E4369

IP67 Extender for wireless control of LED driver with dimming DALI interface based on Casambi technology.

It has a DALI2 output with the capacity to control up to 40 lighting fixtures.

With the addition of a further external BUS DALI power supply it is possible to control up to 64 fixtures.

IP67 Extender is preset to the DALI broadcast profile, meaning all the luminaires connected to it are dimmable at the same level.

In addition to the DALI broadcast other operating modes are available, such as:

- EXTENDER DALI 8CH
- EXTENDER DALI Tunable White
- EXTENDER DALI 4CH
- EXTENDER DALI DT8 Tunable White

Due to the technological evolution of the electronic components, the data provided may be updated, and as such, confirmation must be requested during the order process.

Luminous flux and power supply have +/-10% tolerances with respect to the indicated value. tq +25°C (CIE 121).

We reserve the right to make technical changes.

Targetti Sankey S.r.l.
Via Pratese, 164
50145 Firenze - Italy
Tel: +39 055 37911
targetti.com
targetti@targetti.com

CCIAA Firenze
Share Capital:
€ 500.000,00
VAT N. (IT):
01537660480
R.E.A.: FI-275656

TARGETTI

E013ZMH840DAASS | KEPLERO 280 Zoom

Adjustable recessed professional projector equipped with LED sources and variable beam openings

Surge protector



Code

A013D

Surge protector compatible with CLASS II lighting fixtures.
 DALI, DMX, 0-10V datalines compliance.
 Operating voltage 230-277Vac.
 SPD type 2+3.
 Max surge protection 10kV.
 CLASS II
 IP65

Due to the technological evolution of the electronic components, the data provided may be updated, and as such, confirmation must be requested during the order process.

Luminous flux and power supply have +/-10% tolerances with respect to the indicated value. tq +25°C (CIE 121).

We reserve the right to make technical changes.

Targetti Sankey S.r.l.
 Via Pratese, 164
 50145 Firenze - Italy
 Tel: +39 055 37911
 targetti.com
 targetti@targetti.com

CCIAA Firenze
 Share Capital:
 € 500.000,00
 VAT N. (IT):
 01537660480
 R.E.A: FI-275656

TARGETTI